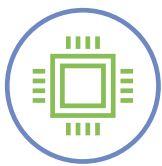


# ideapad Flex 3i Chromebook (11", 6)

## WORK THE WAY YOU WANT WITH A VERSATILE CHROMEBOOK.

With a full keyboard and spacious trackpad, the versatile and portable Lenovo **IdeaPad™** Flex 3i Chromebook measures just 18.45 mm thick and weighs less than 1.25 kg. Switch from laptop mode to tent, stand, and tablet modes to fit your lifestyle needs. Watch crisp visuals in high-definition with the 10-point touchscreen on the 11.6" IPS display, or talk to Google to help you multi-task, control your smart devices, manage your day, and more.<sup>1</sup> The Lenovo **IdeaPad** Flex 3i Chromebook with Intel® Inside™ delivers the performance you need on apps and on the web. It loads content-rich webpages quickly, provides brilliant video playback, and lets you multi-task effortlessly while delivering amazing battery life. Get the Intel®-based Lenovo **IdeaPad** Flex 3i Chromebook for Intel®-level performance at a great value.

### WHY YOU SHOULD BUY LENOVO IDEPAD FLEX 3i CHROMEBOOK (11", 6)



#### Nimble and agile

Built to last and ready when you are, the **IdeaPad** Flex 3i Chromebook delivers powerful and nimble processing for day-to-day tasks with LPDDR4 memory, eMMC storage, fast boot-ups<sup>2</sup> and software loading. You'll have a steady and reliable companion for years, with Chromebook continually optimizing its performance<sup>3</sup>. Get more done fast using your voice. Send an email, find documents, listen to music, access your calendar, or control smart home devices, all without switching screens. Just say "Hey Google" to get started.<sup>1</sup>



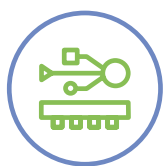
#### Designed for sharing

The **IdeaPad** Flex 3i Chromebook 11" is designed to accommodate all needs of a family. Watch your shows and share with your family via the wider viewing angle on the IPS display, while also getting the full touch interface experience with the 10-point touchscreen. Listen to crystal-clear audio through its dual user-facing 2W stereo speakers. No matter what your task is, you can each download what you need from a rich library of apps such as Microsoft® Word<sup>4</sup>, Google Docs and Google Meet in peace—and collaborate, work and connect with others.



#### A cool Chromebook for every lifestyle

The **IdeaPad** Flex 3i Chromebook 11" channels the essence of cool. It is more flexible than traditional laptops and looks cool with Lenovo's iconic dual-tone textured design. It can adapt to your needs – use it in tent mode to watch videos, in tablet mode for drawing, or in laptop mode for working. You'll discover how fast and simple the Chromebook is the very first time you use it. Just login with your Google Account and immediately access all your Google Drive documents and files and Chrome preferences.



#### Complete I/O and Bluetooth® support

This slim device expands its capacity by allowing you to connect to multiple devices in a simple and fast manner. With full I/O support, the **IdeaPad** Flex 3i Chromebook features one USB 3.1 Type-C™ port and two USB 3.1 Type-A ports. That's complemented by 2x2 ax WiFi with Bluetooth® 5.1, so that users may also connect to over two Bluetooth® devices at a time.



<sup>1</sup> An Internet connection is required to enable Google Assistant.

<sup>2</sup> Boot up speed varies depending on device.

<sup>3</sup> Chromebook software updates generally arrive every 6 weeks but are occasionally delayed to ensure optimal user experience upon rollout.

<sup>4</sup> Additional functionality available with a Microsoft 365 subscription. Microsoft is a registered trademark of Microsoft Corporation.

Lenovo



WWW.LENOVO.COM



# ideapad Flex 3i Chromebook (11", 6)

## SPECIFICATIONS

IdeaPad Flex 3i Chromebook (11", 6)\*

### PERFORMANCE

#### Processor

Intel® Celeron® N4500  
Intel® Pentium® N6000

#### Operating System

Chrome OS

#### Memory

DDR4 : 4 GB / 8 GB

#### Storage

eMMC : 32 GB / 64 GB / 128 GB

#### Audio

2 x 2W Stereo Speakers

### DESIGN

#### Display

11.6" HD IPS Touchscreen<sup>1</sup>

#### Dimensions (W x D x H)

(mm) : 285.5 x 205.2 x 18.45  
(inches) : 11.24" x 8.08" x 0.73"

#### Net Weight

Starting at 1.25 kg (2.75 lbs)

#### Colors

Abyss Blue  
Arctic Grey

### CONNECTIVITY

#### WLAN & Bluetooth\*

1 x WiFi 802.11 ax  
1 x WiFi 802.11 ac  
Bluetooth® 5.1 Combo with WiFi Card

#### Input/Output (I/O) Ports

1 x USB 3.1 Gen1<sup>2</sup> (Type-C™)  
2 x USB 3.1 Gen 1<sup>2</sup> (Type-A)  
1 x HDMI™ 1.4  
1 x Audio Combo Jack  
1 x microSD™ Card Slot

### PRELOADED SOFTWARE

- Google Assistant
- Google Play Store
- Android™ Studio

<sup>1</sup> Optional.

<sup>2</sup> The actual transfer speed of the USB 3.1 Gen 1 will vary and, depending on many factors, such as the processing capability of host and peripheral devices, file attributes and other factors related to system configuration and your operating environments, will be slower than a speed of 5 Gbit/s.



Lenovo

## LENOVO SERVICES

### Warranty Upgrades - On-site / In-Home Service

Maximizes PC uptime and productivity by providing convenient, fast repair services in your own home.

### Accidental Damage Protection

Avoid the hassles of unexpected repair costs. Provides coverage for non-warranted damage incurred under normal operating conditions, such as minor spills, drops or damage to the integrated screen.

### Warranty Extensions (1-to-3 Years Total Duration)

This fixed-term, fixed-cost service helps accurately budget for PC expenses, protect your valuable investment and potentially lower the cost of ownership over time.

\* Specification and configuration may vary by different platform and model.

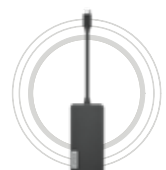
## OPTIONS & ACCESSORIES



Lenovo 110 Stereo USB Headset



Lenovo 300 Wireless Compact Mouse



Lenovo USB-C 7-in-1 Travel Hub

\* Example of Lenovo marketing naming convention



[WWW.LENOVO.COM](http://WWW.LENOVO.COM)

Lenovo reserves the right to alter product offerings and specifications at any time, without notice. Lenovo makes every effort to ensure accuracy of all information but is not liable or responsible for any editorial, photographic or typographic errors. All images are for illustration purposes only. For full Lenovo product, service and warranty specifications visit [www.lenovo.com](http://www.lenovo.com). Lenovo makes no representations or warranties regarding third party products or services. **Trademarks:** The following are trademarks or registered trademarks of Lenovo: Lenovo, the Lenovo logo, ideapad, IdeaCentre, yoga and yoga home. Microsoft, Windows and Vista are registered trademarks of Microsoft Corporation. Ultrabook, Celeron, Celeron Inside, Core Inside, Intel, Intel Atom, Intel Atom Inside, Intel Core, Intel Inside, Intel Inside Logo, Intel vPro, Itanium, Itanium Inside, Pentium, Pentium Inside, vPro Inside, Xeon, Xeon Phi, and Xeon Inside are trademarks of Intel Corporation in the U.S. and/or other countries. Other company, product and service names may be trademarks or service marks of others. ©2021 CNES / Astrium, DigitalGlobe. Visit [www.lenovo.com/lenovo/us/en/safecomp/](http://www.lenovo.com/lenovo/us/en/safecomp/) periodically for the latest information on safe and effective computing. ©2021 Lenovo. All rights reserved.

